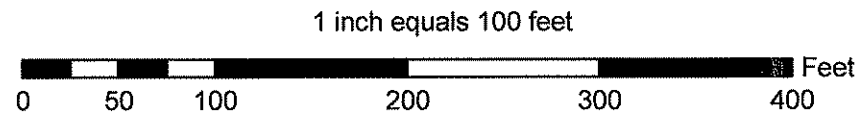


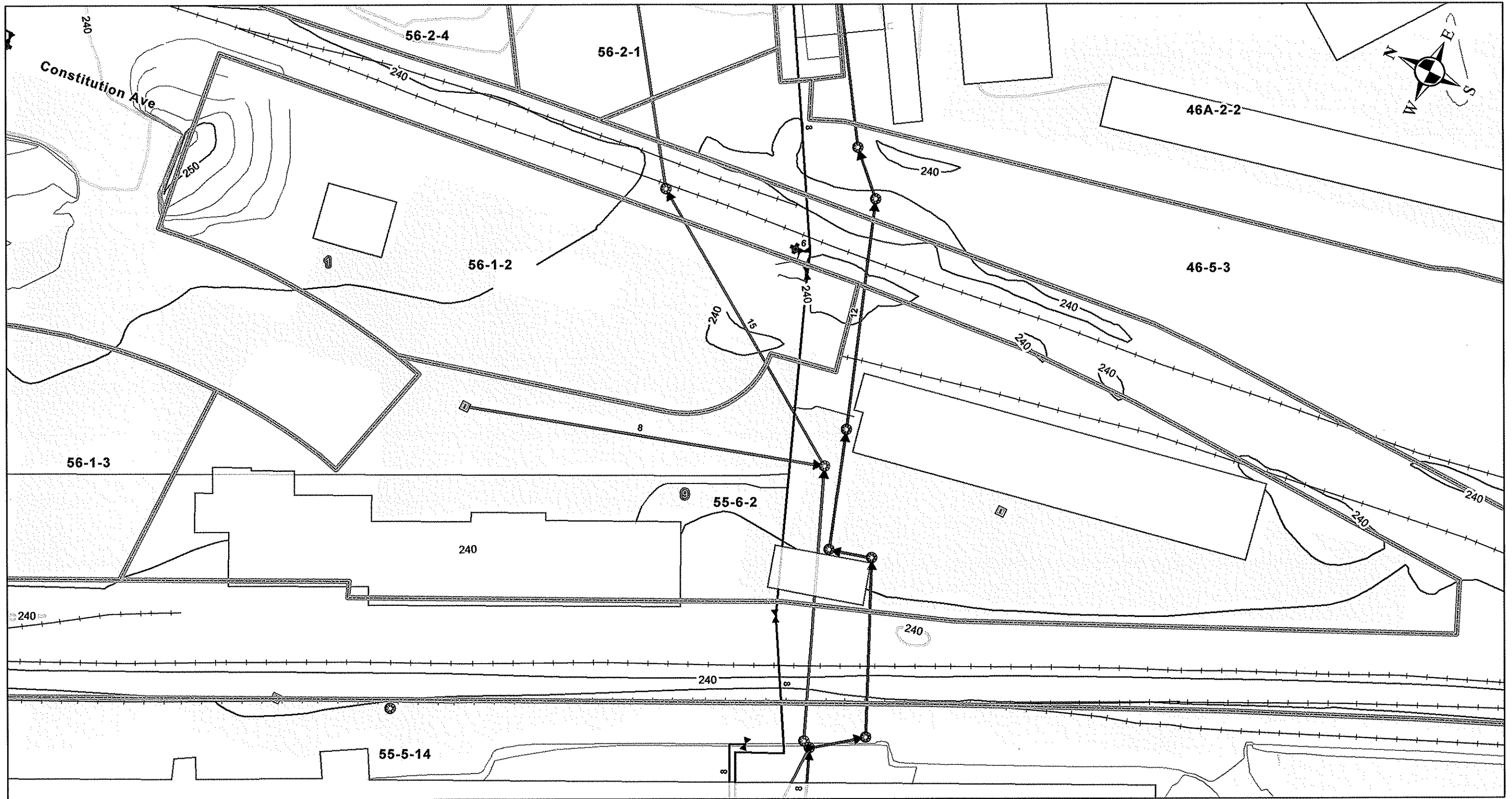
# Parcel 46-5-3

South Commercial St  
 City of Concord, New Hampshire



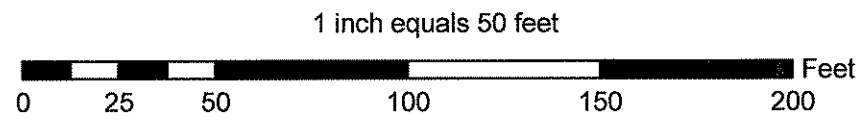
This map was prepared for use by the City of Concord. The City makes no representations or guarantees of its accuracy or its suitability for use other than by the City. Users other than the City, do so at their own risk.  
 Copyright © 2006 City of Concord, NH

Parcels	Buildings	Railroads	Drainage Mains
Pavement	Contours	Hydrants	Catch Basin
Street	Depression	Water Valves	Drain Manholes
Driveways & Parking	Intermediate	Water Services	Sewer Mains
Sidewalk	Index	Water Mains	Sewer Manholes



# Parcel 55-6-2

South Commercial St  
 City of Concord, New Hampshire

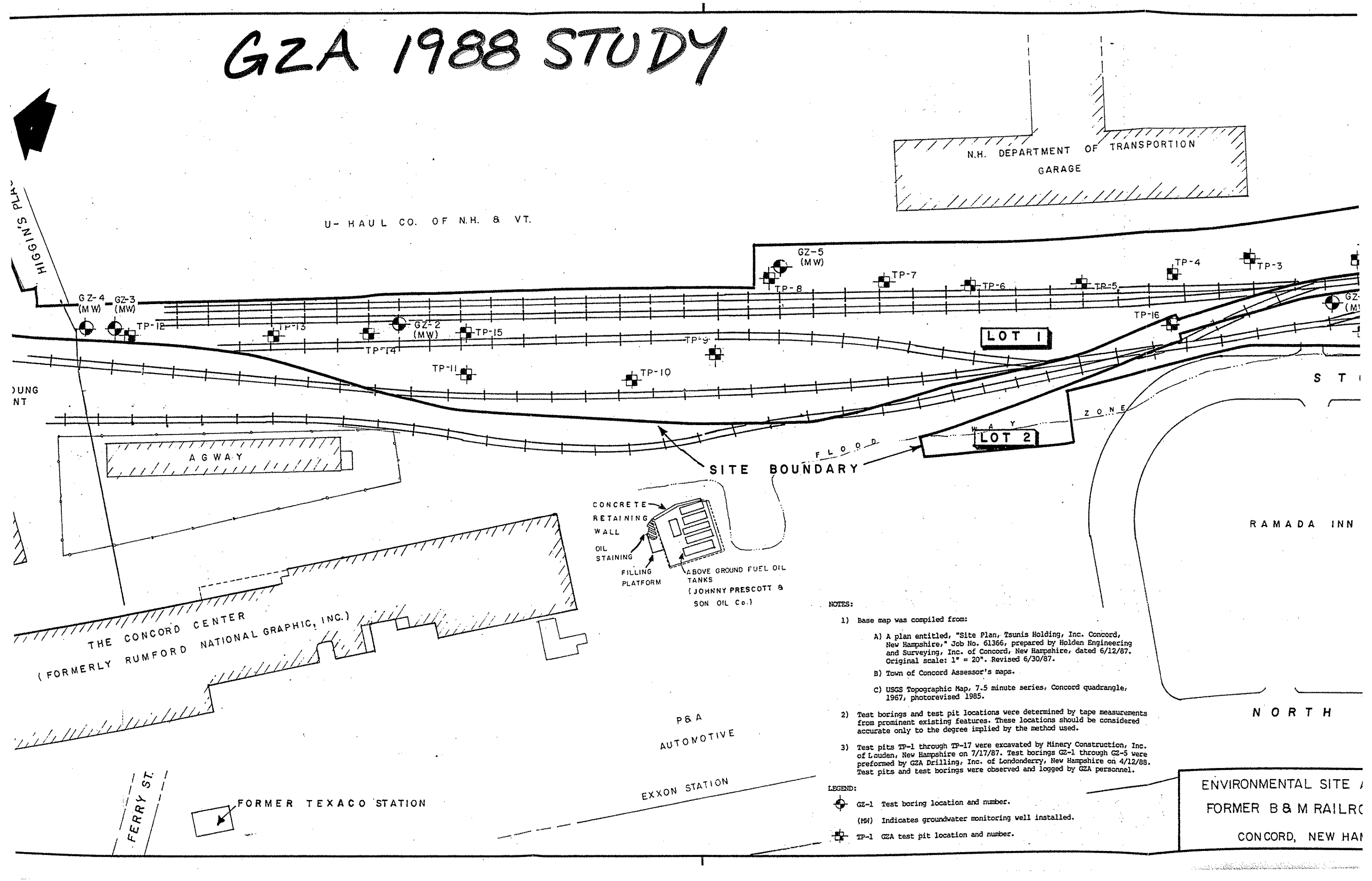


This map was prepared for use by the City of Concord. The City makes no representations or guarantees of its accuracy or its suitability for use other than by the City. Users other than the City, do so at their own risk.

Copyright © 2006 City of Concord, NH

Parcels	Buildings	Railroads	Drainage Mains
Pavement	Contours	Hydrants	Catch Basin
Street	Depression	Water Valves	Drain Manholes
Driveways & Parking	Intermediate	Water Services	Sewer Mains
Sidewalk	Index	Water Mains	Sewer Manholes

# GZA 1988 STUDY



N.H. DEPARTMENT OF TRANSPORTION  
GARAGE

U-HAUL CO. OF N.H. & VT.

GZ-5 (MW)

GZ-4 (MW)

GZ-3 (MW)

GZ-2 (MW)

LOT 1

LOT 2

A G W A Y

SITE BOUNDARY

CONCRETE RETAINING WALL  
OIL STAINING  
FILLING PLATFORM  
ABOVE GROUND FUEL OIL TANKS  
(JOHNNY PRESCOTT & SON OIL Co.)

THE CONCORD CENTER  
(FORMERLY RUMFORD NATIONAL GRAPHIC, INC.)

RAMADA INN

P & A  
AUTOMOTIVE

EXXON STATION

FORMER TEXACO STATION

FERRY ST.

NOTES:

- 1) Base map was compiled from:
  - A) A plan entitled, "Site Plan, Tsunis Holding, Inc. Concord, New Hampshire," Job No. 61366, prepared by Holden Engineering and Surveying, Inc. of Concord, New Hampshire, dated 6/12/87. Original scale: 1" = 20". Revised 6/30/87.
  - B) Town of Concord Assessor's maps.
  - C) USGS Topographic Map, 7.5 minute series, Concord quadrangle, 1967, photorevised 1985.
- 2) Test borings and test pit locations were determined by tape measurements from prominent existing features. These locations should be considered accurate only to the degree implied by the method used.
- 3) Test pits TP-1 through TP-17 were excavated by Minery Construction, Inc. of Loudon, New Hampshire on 7/17/87. Test borings GZ-1 through GZ-5 were performed by GZA Drilling, Inc. of Londonderry, New Hampshire on 4/12/88. Test pits and test borings were observed and logged by GZA personnel.

LEGEND:

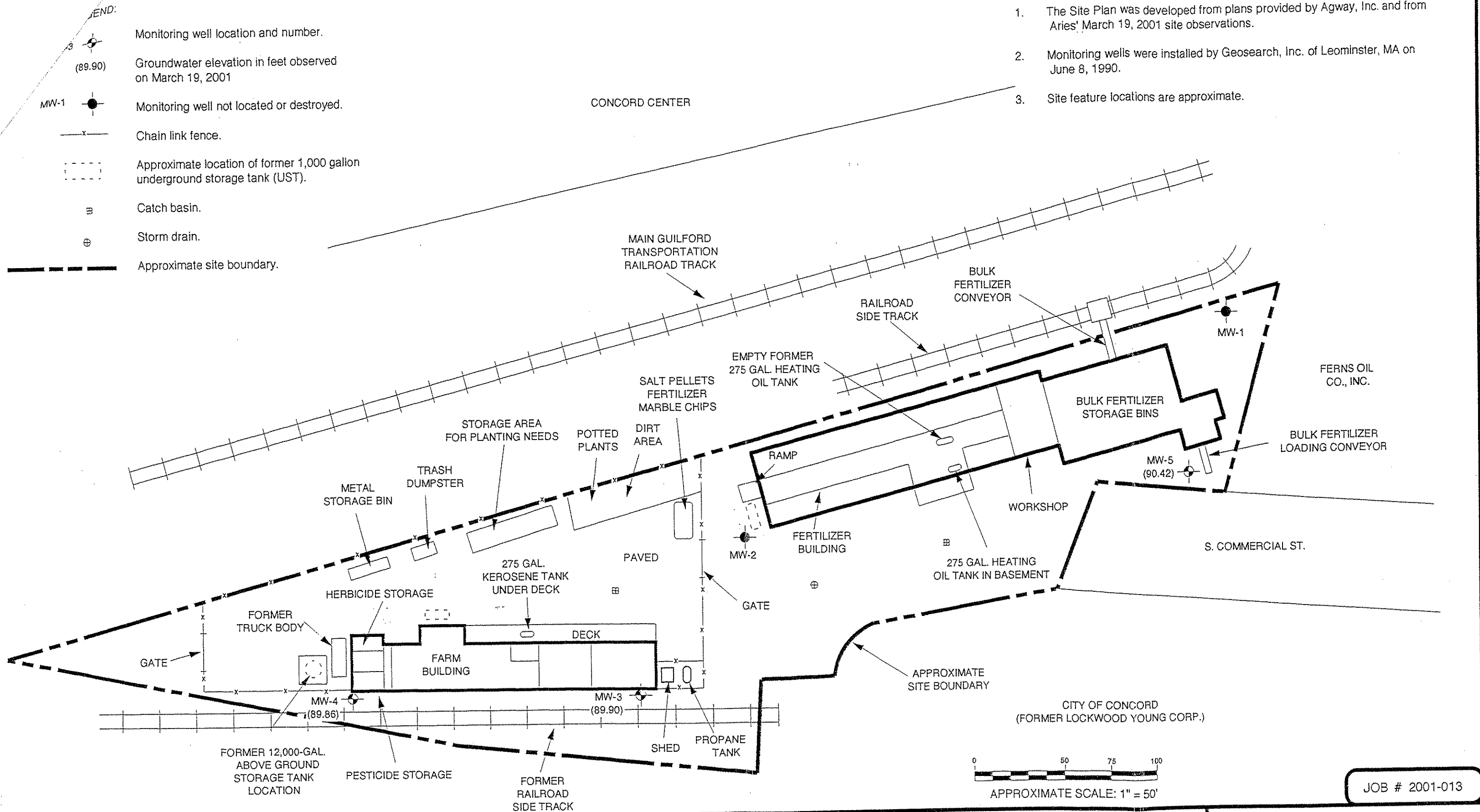
- ⊙ GZ-1 Test boring location and number.
- (MW) Indicates groundwater monitoring well installed.
- ⊠ TP-1 GZA test pit location and number.

ENVIRONMENTAL SITE /  
FORMER B & M RAILRO  
CONCORD, NEW HAM

NORTH

NOTES:

1. The Site Plan was developed from plans provided by Agway, Inc. and from Aries' March 19, 2001 site observations.
2. Monitoring wells were installed by Geosearch, Inc. of Leominster, MA on June 8, 1990.
3. Site feature locations are approximate.

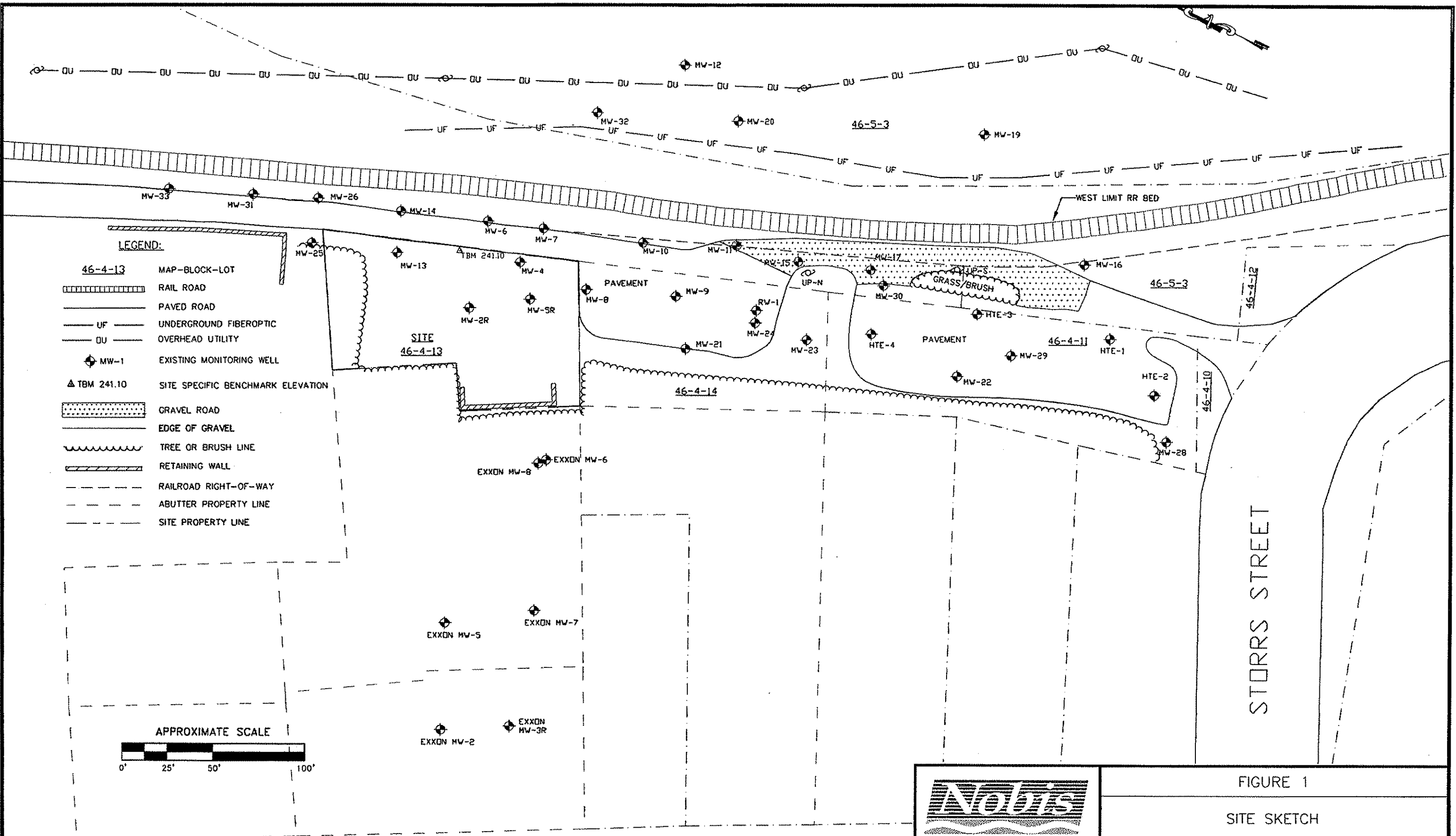


**ARIES**  
ENGINEERING, INC.  
environmental engineers and hydrogeologists

PHASE II ENVIRONMENTAL SITE ASSESSMENT UPDATE  
AGWAY, INC. FACILITY  
CONCORD, NEW HAMPSHIRE

SITE PLAN  
MARCH 2001  
FIGURE 2

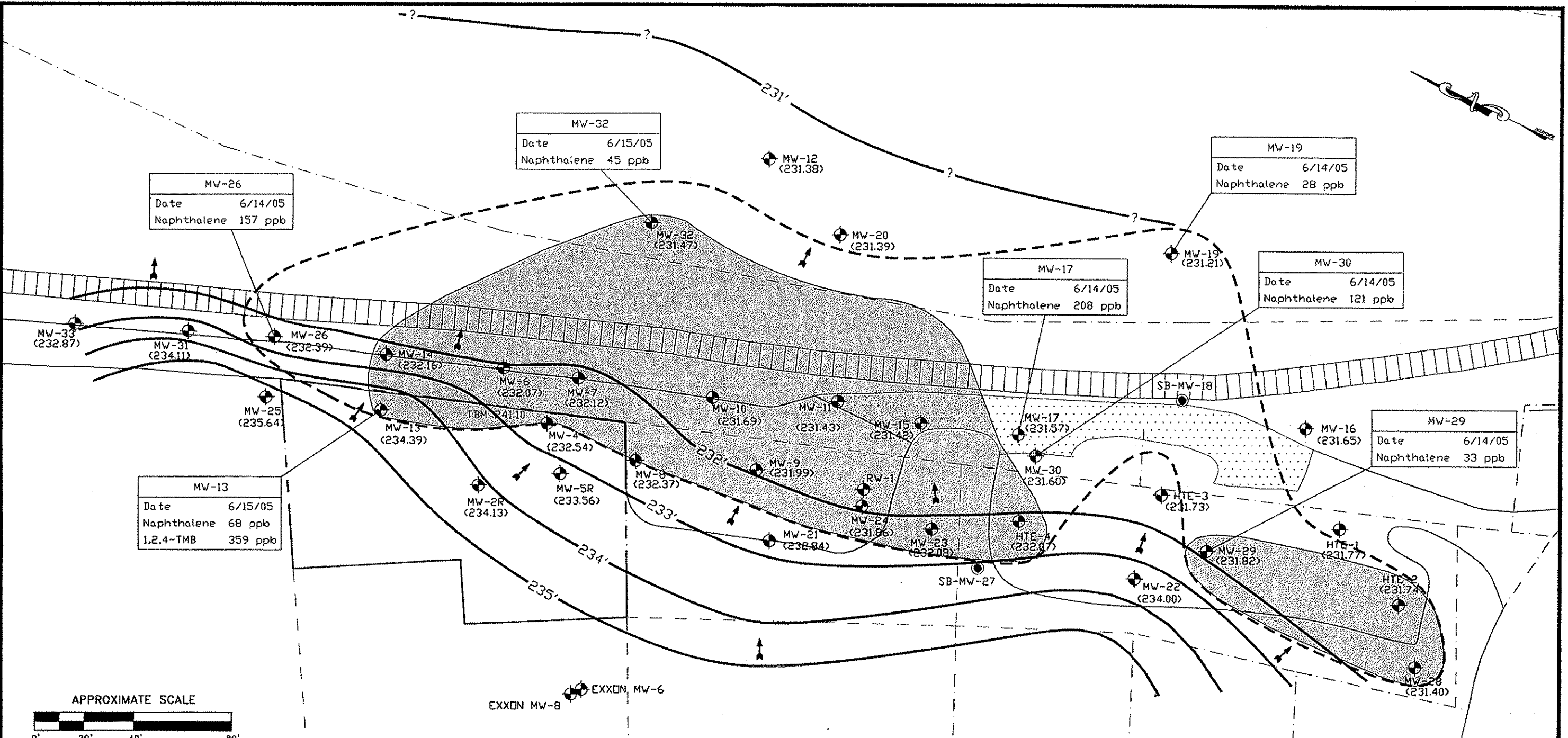
J:\71830\_Prescott\_Oil\71830.04\RAP\71830.04\_RAP\_CADD\dwg\RAP\_Figures.flnot.dwg



Nobis Engineering, Inc.  
 18 Chenell Drive  
 Concord, NH 03301  
 Tel (603) 224-4182  
 Fax (603) 224-2507  
 www.nobisengineering.com

FIGURE 1	
SITE SKETCH	
JOHNNY PRESCOTT & SONS OIL CO. 196 NORTH MAIN STREET (REAR) CONCORD, NEW HAMPSHIRE	
PROJECT 71830.04	JUNE 2006

J:\71830 Prescott Oil\71830.04 RAP\CADD\dwg\RAP\_Figures.incl.dwg



MW-26  
Date 6/14/05  
Naphthalene 157 ppb

MW-32  
Date 6/15/05  
Naphthalene 45 ppb

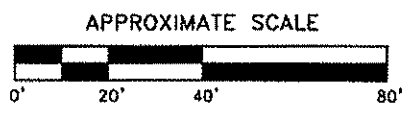
MW-19  
Date 6/14/05  
Naphthalene 28 ppb

MW-17  
Date 6/14/05  
Naphthalene 208 ppb

MW-30  
Date 6/14/05  
Naphthalene 121 ppb

MW-13  
Date 6/15/05  
Naphthalene 68 ppb  
1,2,4-TMB 359 ppb

MW-29  
Date 6/14/05  
Naphthalene 33 ppb



**LEGEND:**

- RAIL ROAD
- PAVED ROAD
- GRAVEL ROAD
- EDGE OF GRAVEL
- ABUTTER PROPERTY LINE
- SITE PROPERTY LINE

- MW-1  
(232.37) EXISTING MONITORING WELL
- 235' GROUNDWATER ELEVATION CONTOUR
- DASHED LINE INFERRED LIMIT OF VOC PLUME
- GROUND WATER FLOW DIRECTION
- ESTIMATED EXTEND OF LNAPL PLUME (2005 AVERAGE)

**Notes:**  
 1. The VOC plume was inferred based on VOC results for samples collected on the dates indicated.  
 2. Groundwater samples were not collected where LNAPL was observed greater than 0.1' thick.  
 3. Sample results are only shown for VOC exceedances. No other VOCs were observed to exceed the AGQS.

Nobis Engineering, Inc.  
 18 Chenell Drive  
 Concord, NH 03301  
 Tel (603) 224-4182  
 Fax (603) 224-2507  
 www.nobisengineering.com

**FIGURE 2**

**GROUNDWATER ELEVATION CONTOURS AND  
 INFERRED VOC PLUME**

JOHNNY PRESCOTT & SONS OIL CO.  
 196 NORTH MAIN STREET (REAR)  
 CONCORD, NEW HAMPSHIRE

---

PROJECT 71830.04 JUNE 2006