

LEGEND

ENGINEERING

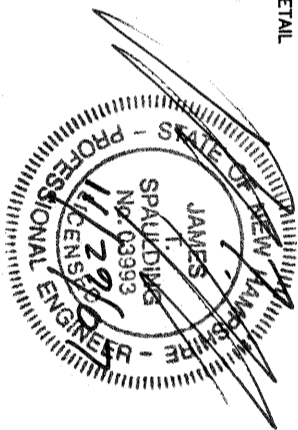
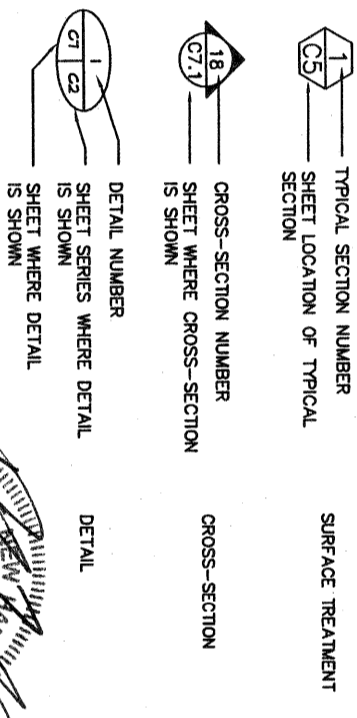
| PROPOSED | EXISTING | DESCRIPTION |
|----------|----------|------------------------------|
| 212 | 212 | CONTOUR INTERVALS |
| 212.3 | X 212.3 | SPOT ELEVATIONS |
| R=5' | | LENGTH OF RADIUS DESCRIPTION |
| | X WLF 1B | WETLAND FLAG |

| PROPOSED | EXISTING | DESCRIPTION |
|----------|----------|-------------------------------|
| --- | --- | PROPERTY LINE |
| --- | --- | DELINEATED WETLAND BOUNDARY |
| --- | --- | PREScriptive WETLAND BOUNDARY |
| --- | --- | EASEMENT |
| --- | --- | EASEMENT (ELECTRIC) |
| --- | --- | EASEMENT (GAS) |
| --- | --- | SLOPED GRANITE CURBING |
| --- | --- | VERTICAL GRANITE CURBING |
| --- | --- | BITUMINOUS CURBING |
| --- | --- | EDGE OF PAVEMENT |
| --- | --- | STONE WALL |
| --- | --- | FENCE |

| PROPOSED | EXISTING | DESCRIPTION |
|----------------|----------------|---|
| U ₂ | U ₂ | UTILITY POLE |
| CB | CB | CATCH BASIN/DROP INLET |
| SMH | SMH | SEWER MANHOLE |
| DMH | DMH | DRAIN MANHOLE |
| C.O. | C.O. | CLEAN OUT |
| W | W | WELL |
| W | W | FUEL OIL RELATED COVERS |
| W | W | INVERT |
| W | W | WELL |
| W | W | WATER LINE GATE VALVE |
| D | D | DRAIN LINE |
| S | S | SEWER LINE |
| FS | FS | FIRE SERVICE LINE |
| UT | UT | TELEPHONE LINE |
| OHW | OHW | UNDERGROUND TELEPHONE & COMMUNICATIONS OVERHEAD ELECTRIC LINE |
| UE | UE | UNDERGROUND ELECTRIC LINE |
| W | W | WATER LINE |
| UD | UD | UNDER DRAIN LINE |
| RD | RD | ROOF DRAIN LINE |
| | | FIRE HYDRANT |
| | | LIGHT POLE |

GENERAL

| PROPOSED | EXISTING | DESCRIPTION |
|----------|----------|---------------------|
| --- | --- | CONCRETE |
| (4) | | PARKING SPACE COUNT |
| C5 | | SURFACE TREATMENT |



SURVEY NOTES

1. VERTICAL DATUM IS BASED ON NGVD 1929.
2. TOPOGRAPHIC INFORMATION IS BASED ON SURVEY PERFORMED BY RICHARD D. BARTLETT & ASSOCIATES, LLC. SEPTEMBER 6, 2007.

SITE NOTES

1. IT SHALL BE THE CONTRACTOR'S RESPONSIBILITY TO FAMILIARIZE HIMSELF WITH THE SITE AND ALL EXISTING CONDITIONS SURROUNDING IT AND THEREON.
2. LIMITS OF WORK ARE SHOWN AS APPROXIMATE. THE CONTRACTOR SHALL COORDINATE ALL WORK TO PROVIDE SMOOTH TRANSITIONS. THIS INCLUDES GRADING, PAVEMENT, CURBING, SIDEWALKS AND ALIGNMENTS.
3. THE CONTRACTOR SHALL BID AND PERFORM THE WORK IN ACCORDANCE WITH ALL LOCAL, STATE AND NATIONAL CODES, SPECIFICATIONS, REGULATIONS AND STANDARDS.
4. THE SITE SHALL BE THOROUGHLY SECURED ON A DAILY BASIS BY THE CONTRACTOR AT THE COMPLETION OF CONSTRUCTION OPERATIONS.
5. THE ENGINEER SHALL BE CONTACTED FOR CLARIFICATION OF SITE WORK AND/OR GRADING, IF NECESSARY.
6. WRITTEN DIMENSIONS HAVE PRECEDENCE OVER SCALED DIMENSIONS. THE CONTRACTOR SHALL USE CAUTION WHEN SCALING DRAWINGS. IN CASE OF CONFLICT BETWEEN THIS PLAN SET AND ANY OTHER DRAWING AND/OR SPECIFICATION, THE ENGINEER SHALL BE NOTIFIED IMMEDIATELY FOR CLARIFICATIONS.
7. SITE WORK SHALL BE CONSTRUCTED FROM A COMPLETE SET OF PLANS. AS NOT ALL FEATURES ARE DETAILED ON EVERY PLAN, THE ENGINEER IS TO BE NOTIFIED OF ANY CONFLICT WITHIN THIS SET OF PLANS.

GENERAL NOTES

1. THE CONTRACTOR IS RESPONSIBLE FOR THE MEANS AND METHODS OF CONSTRUCTION AND FOR CONDITIONS AT THE SITE. THESE PLANS, PREPARED BY THE H.L. TURNER GROUP INC., DO NOT EXTEND TO OR INCLUDE SYSTEMS PERTAINING TO THE SAFETY OF THE CONSTRUCTION CONTRACTOR OR THEIR EMPLOYEES, AGENTS OR REPRESENTATIVES IN THE PERFORMANCE OF THE WORK. THE SEAL OF THE ARCHITECT OR ENGINEER HEREON DOES NOT EXTEND TO ANY SUCH SAFETY SYSTEMS THAT MAY NOW OR HEREAFTER BE INCORPORATED INTO THESE PLANS. THE CONSTRUCTION CONTRACTOR SHALL PREPARE OR OBTAIN THE APPROPRIATE SAFETY SYSTEMS THAT MAY BE REQUIRED BY THE U.S. OCCUPATIONAL SAFETY AND HEALTH ADMINISTRATION (OSHA) AND/OR LOCAL REGULATIONS.
2. THIS PROJECT IS TO BE CONSTRUCTED IN ACCORDANCE WITH THE NEW HAMPSHIRE DEPARTMENT OF TRANSPORTATION STANDARD SPECIFICATIONS FOR HIGHWAYS AND BRIDGES.
3. CONTRACTOR SHALL PROTECT AND MAINTAIN EXISTING BENCHMARKS AND BOUNDS. ALL BENCHMARKS AND BOUNDS DISTURBED BY THE CONTRACTOR SHALL BE REESTABLISHED BY A NEW HAMPSHIRE LICENSED LAND SURVEYOR AT NO EXPENSE OF THE OWNER.
4. THE CONTRACTOR IS RESPONSIBLE FOR ALL PERMITS, FEES, TEMPORARY UTILITIES AND COORDINATION WITH ALL AGENCIES IN OBTAINING ACCESS TO THE SITE AND PERFORMING ALL WORK REQUIRED FOR THIS PROJECT.
5. THE CONTRACTOR IS RESPONSIBLE FOR THE COORDINATION AND PROVISION OF ALL TRAFFIC AND PEDESTRIAN CONTROL AND SAFETY FOR THE DURATION OF THIS PROJECT.
6. VERIFY TBM ELEVATIONS PRIOR TO CONSTRUCTION.
7. THE CONTRACTOR SHALL OBTAIN A STREET EXCAVATION PERMIT FROM THE CITY OF CONCORD, ENGINEERING DIVISION PRIOR TO INITIATING CONSTRUCTION.

UTILITY NOTES

1. THE CONTRACTOR IS ADVISED THAT UNDERGROUND UTILITIES ARE PRESENT. THE UNDERGROUND UTILITIES ARE SHOWN IN APPROXIMATE LOCATIONS BASED ON RECORDED UTILITY DRAWINGS. LOCATIONS ARE NOT GUARANTEED TO BE ACCURATE OR COMPLETE. IT IS THE RESPONSIBILITY OF THE CONTRACTOR TO LOCATE AND PRESERVE ALL UTILITY SERVICES.
2. THE CONTRACTOR SHALL BE RESPONSIBLE FOR VERIFYING AND DETERMINING THE LOCATION, SIZE, AND ELEVATION OF ALL EXISTING UTILITIES SHOWN ON THESE PLANS PRIOR TO THE START OF ANY CONSTRUCTION. THE ENGINEER SHALL BE NOTIFIED IN WRITING OF ANY UTILITIES FOUND INTERFERING WITH THE PROPOSED CONSTRUCTION, AND APPROPRIATE REMEDIAL ACTION SHALL BE AGREED TO BY THE ENGINEER BEFORE PROCEEDING WITH THE WORK. THE CONTRACTOR SHALL BE RESPONSIBLE TO CONTACT "DIGSAFE" (888) 344-7233 AT LEAST 72 HOURS NOT INCLUDING WEEKENDS AND HOLIDAYS PRIOR TO INITIATING CONSTRUCTION ACTIVITIES ON THE SITE. THE CONTRACTOR IS ADVISED THAT DIGSAFE MAY LOCATE UTILITIES OFF THE PUBLIC RIGHT-OF-WAY WHICH MAY BE PRESENT AT THE SITE.
3. THE CONTRACTOR SHALL CONTACT ALL UTILITY COMPANIES OWNING UTILITIES, EITHER OVERHEAD OR UNDERGROUND WITHIN THE CONSTRUCTION AREA AND SHALL COORDINATE WITH THE UTILITY COMPANIES. THE RESPONSIBILITY OF THE CONTRACTOR IS THE RESPONSIBILITY OF THE CONTRACTOR.
4. ADJUST ALL OTHER CASTING ELEVATIONS OF MANHOLES, WATER GATES, AND OTHER UTILITIES TO FINISHED GRADE WITHIN LIMITS OF WORK.

BUS SHELTER PROJECT
CONCORD, NEW HAMPSHIRE

THE H.L. TURNER GROUP Inc.
ARCHITECTS • ENGINEERS
CONSTRUCTION MANAGERS • BUILDING SCIENTISTS
27 LOCKE ROAD
CONCORD, NEW HAMPSHIRE 03301
T-(603) 228-1122 / F-(603) 228-1126
CONCORD NH • HARRISON ME • DANVILLE VT

TURNER GROUP



GENERAL NOTES & LEGENDS

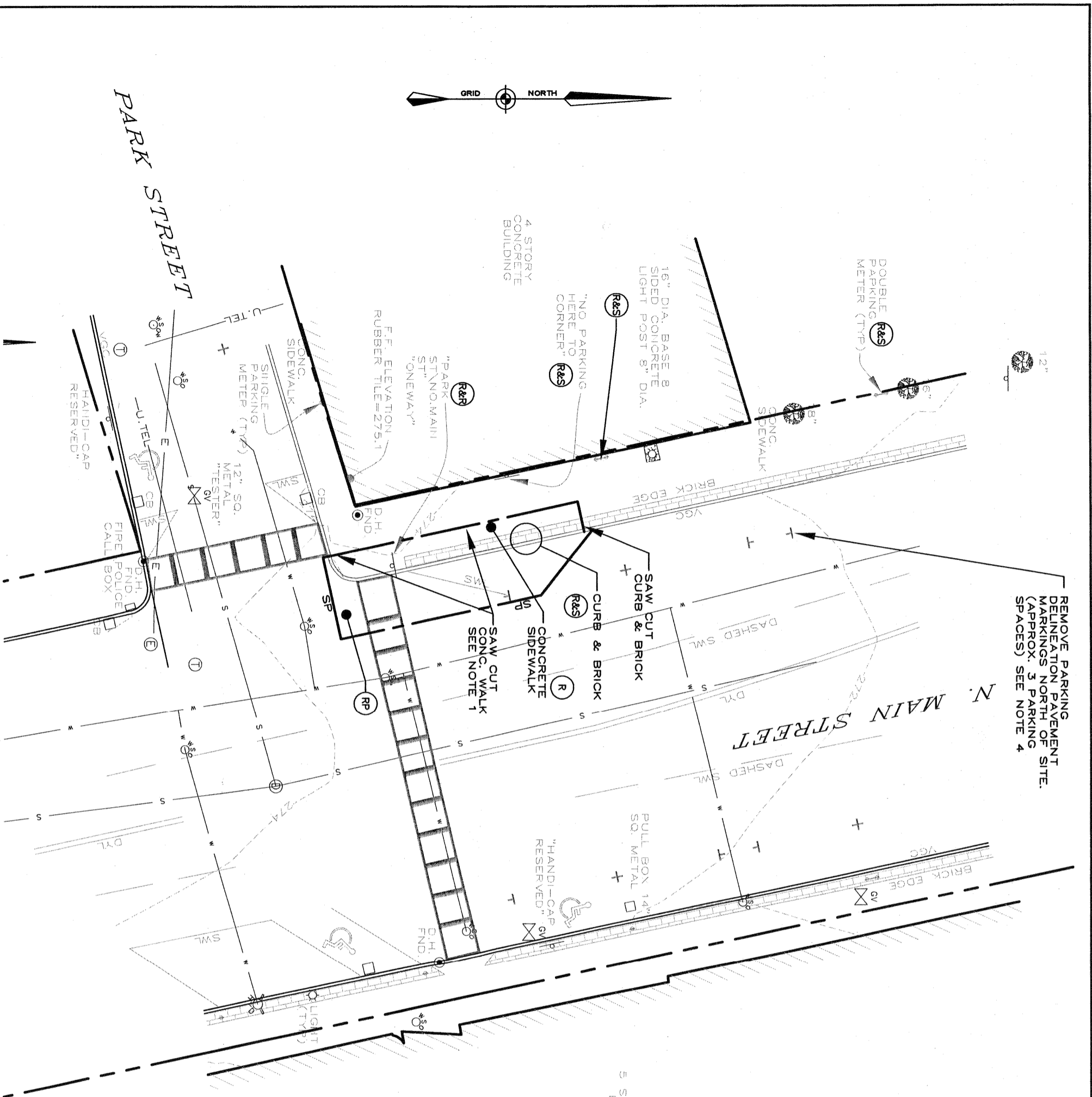
REFERENCE SHEET: 3278 SITE

FIGURE:

CX

DATE: 10/01/07

ISSUED 10/25/07 FOR BIDDING

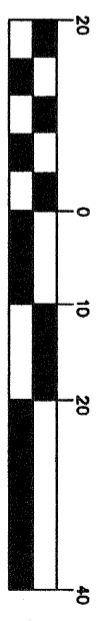


REMOVE PARKING DELINEATION PAVEMENT MARKINGS NORTH OF SITE. (APPROX. 3 PARKING SPACES) SEE NOTE 4

- (R) REMOVE
- (A) ABANDON IN PLACE
- (R&R) REMOVE AND RESET
- (R&S) REMOVE AND SALVAGE TO OWNER
- (P&M) PROTECT AND MAINTAIN
- (RP) REMOVE PAVEMENT
- SP SAWCUT PAVEMENT

NOTES:

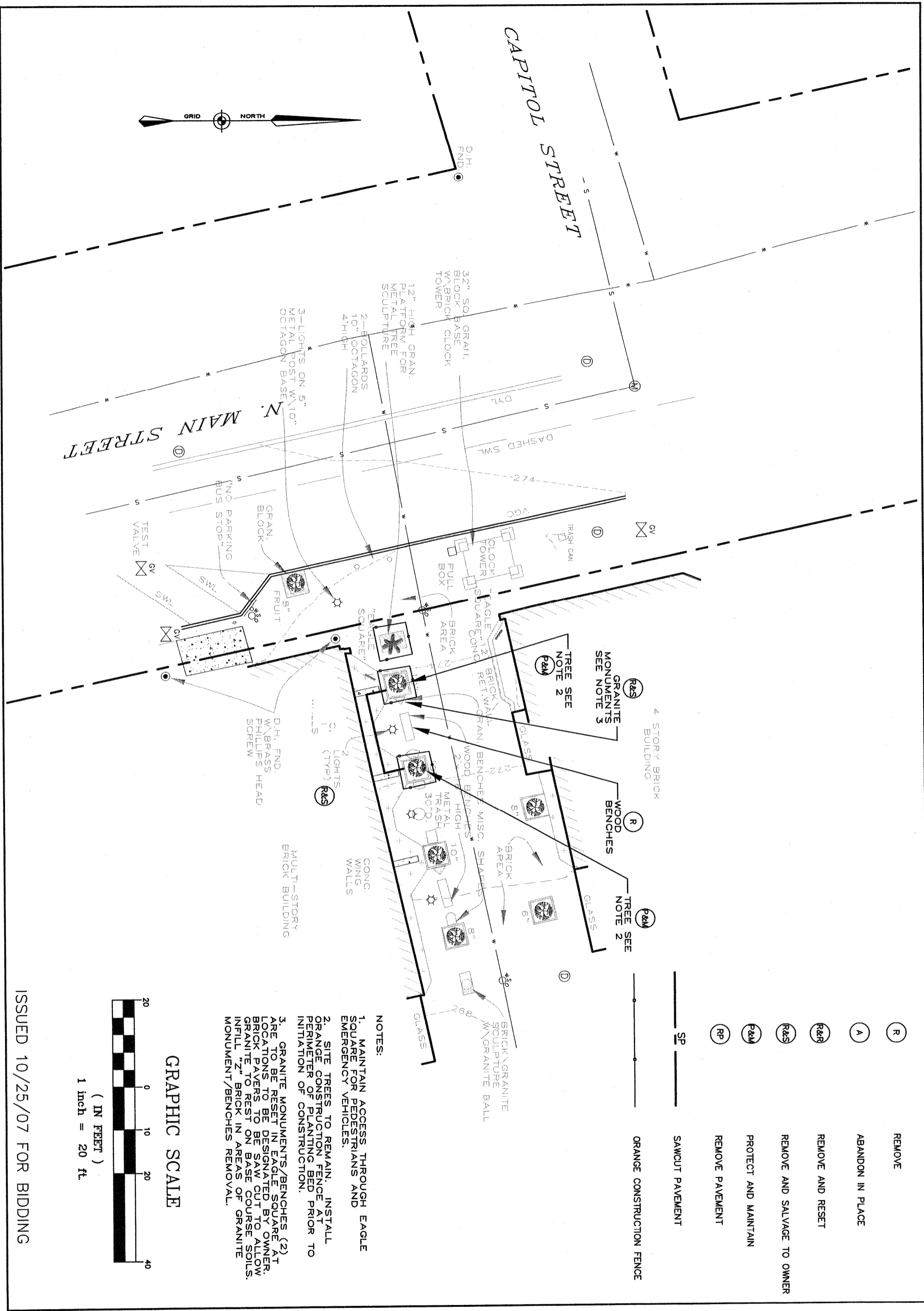
1. IT IS THE INTENT TO SAW CUT SIDE WALK ALONG THE NORTH-SOUTH CONTROL JOINT IN CENTER OF WALK AND EAST-WEST CONTROL JOINT AT NORTH END OF PROJECT.
2. REUSE GRANITE CURB TO THE EXTENT PRACTICAL.
3. REUSE SATISFACTORY SALVAGED BRICK AT THE EAGLE SQUARE SITE.
4. PAVEMENT MARKINGS TO BE REMOVED SHALL BE REMOVED IN ACCORDANCE WITH SHDOT 632.3.6. COVERING WITH BLACKOUT TAPE IS NOT ACCEPTABLE.



GRAPHIC SCALE

ISSUED 10/25/07 FOR BIDDING

| | | | | | |
|---|---|--|----------------------------|--|---|
| <p>DATE: 10/01/07</p> <p>C10</p> | <p>FIGURE:</p> <p>EXISTING CONDITIONS & SITE PREPARATION</p> <p>REFERENCE SHEET: 3278 SITE</p> | | <p>TURNER GROUP</p> | <p>THE H.L. TURNER GROUP Inc.</p> <p>ARCHITECTS • ENGINEERS CONSTRUCTION MANAGERS • BUILDING SCIENTISTS</p> <p>27 LOCKE ROAD CONCORD, NEW HAMPSHIRE 03301 T-(603) 228-1122 / F-(603) 228-1126</p> <p>CONCORD NH • HARRISON ME • DANVILLE VT</p> | <p>BUS SHELTER PROJECT</p> <p>CONCORD, NEW HAMPSHIRE</p> |
|---|---|--|----------------------------|--|---|



ISSUED 10/25/07 FOR BIDDING

DATE: 10/01/07
C1.1
 FIGURE:

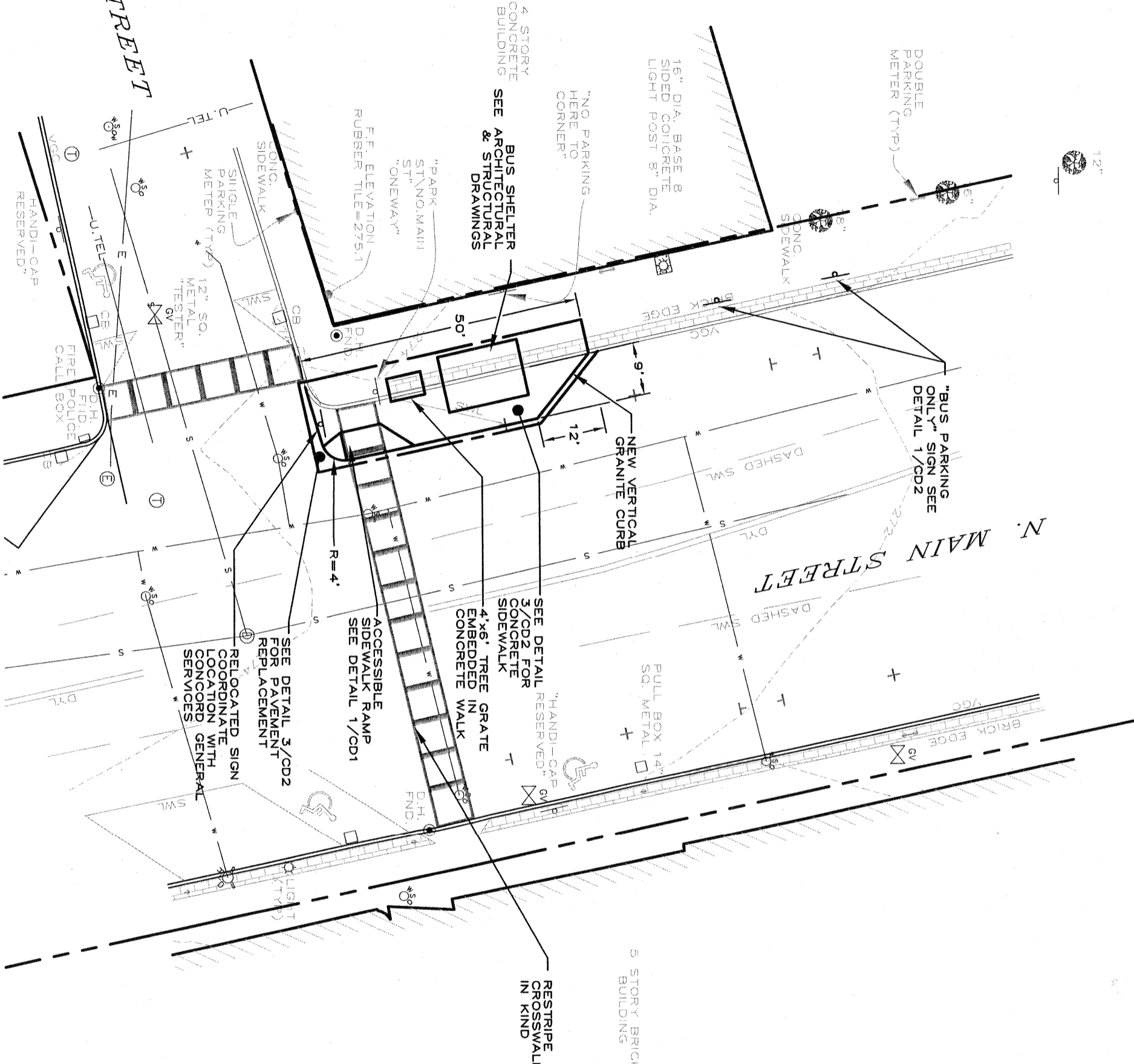
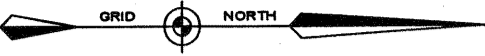
EXISTING CONDITIONS & SITE PREPARATION
 REFERENCE SHEET: 3278 SITE



TURNER GROUP

THE H.L. TURNER GROUP Inc.
 ARCHITECTS · ENGINEERS
 CONSTRUCTION MANAGERS · BUILDING SCIENTISTS
 27 LOCKE ROAD
 CONCORD, NEW HAMPSHIRE 03301
 T-(603) 228-1122 / F-(603) 228-1126
 CONCORD NH · HARRISON ME · DANVILLE VT

BUS SHELTER PROJECT
 CONCORD, NEW HAMPSHIRE



4 STORY CONCRETE BUILDING
SEE ARCHITECTURAL & STRUCTURAL DRAWINGS

"NO PARKING HERE TO CORNER"

16" DIA. BASE 8 SIDED CONCRETE LIGHT POST 8" DIA.

DOUBLE PARKING METER (TYP)

"BUS PARKING ONLY" SIGN SEE DETAIL 1/CD2

NEW VERTICAL GRANITE CURB

SEE DETAIL 3/CD2 FOR CONCRETE SIDEWALK
4"x6" TREE GRATE EMBEDDED IN CONCRETE WALK

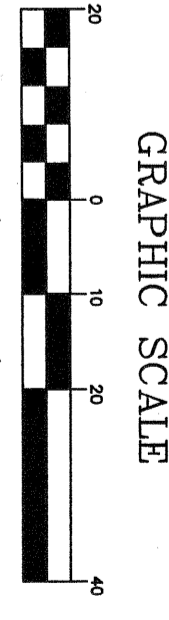
ACCESSIBLE SIDEWALK RAMP SEE DETAIL 1/CD1

RELOCATED SIGN COORDINATE WITH CONCORD GENERAL SERVICES

RESTRIPE CROSSWALK IN KIND

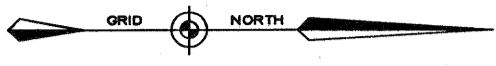
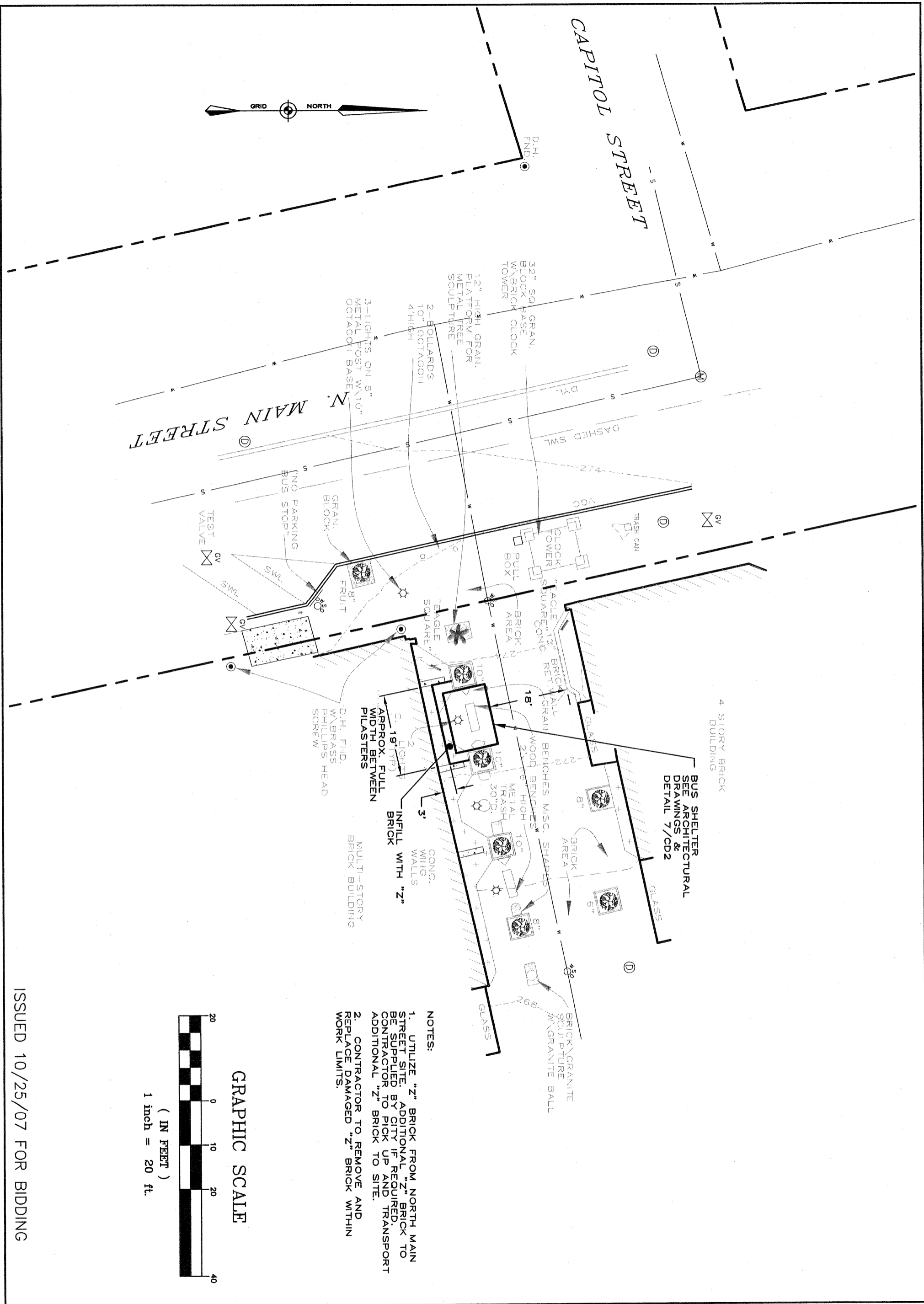
5 STORY BRICK BUILDING

- NOTES:
1. TREE GRATE TO BE CAST IRON URBAN ACCESSORIES TREE GRATE 4"x6" CHINOOK MODEL BLACK POWDERCOAT FINISH. TREE BY OTHERS.
 2. MAINTAIN EXISTING CURB REVEAL.



ISSUED 10/25/07 FOR BIDDING

| | | | | | |
|--|---|--|--------------------------------|--|---|
| <p>DATE: 10/01/07</p> <p>C2.0</p> | <p>FIGURE:</p> <p>PROPOSED SITE PLAN NORTH MAIN STREET</p> <p>REFERENCE SHEET: 3278 SITE</p> | | <p>TURNER GROUP</p> | <p>THE H.L. TURNER GROUP Inc.</p> <p>ARCHITECTS · ENGINEERS CONSTRUCTION MANAGERS · BUILDING SCIENTISTS</p> <p>27 LOCKE ROAD CONCORD, NEW HAMPSHIRE 03301 T-(603) 226-1122 / F-(603) 226-1126</p> <p>CONCORD NH · HARRISON ME · DANVILLE VT</p> | <p>BUS SHELTER PROJECT</p> <p>CONCORD, NEW HAMPSHIRE</p> |
|--|---|--|--------------------------------|--|---|

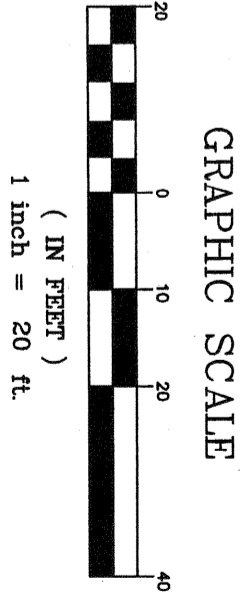


N. MAIN STREET

CAPITOL STREET

- NOTES:
1. UTILIZE "Z" BRICK FROM NORTH MAIN STREET SITE. ADDITIONAL "Z" BRICK TO BE SUPPLIED BY CITY IF REQUIRED. CONTRACTOR TO PICK UP AND TRANSPORT ADDITIONAL "Z" BRICK TO SITE.
 2. CONTRACTOR TO REMOVE AND REPLACE DAMAGED "Z" BRICK WITHIN WORK LIMITS.

BUS SHELTER
SEE ARCHITECTURAL
DRAWINGS &
DETAIL 7/CD2



ISSUED 10/25/07 FOR BIDDING

FIGURE:
C2.1
DATE: 10/01/07

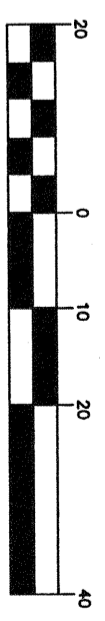
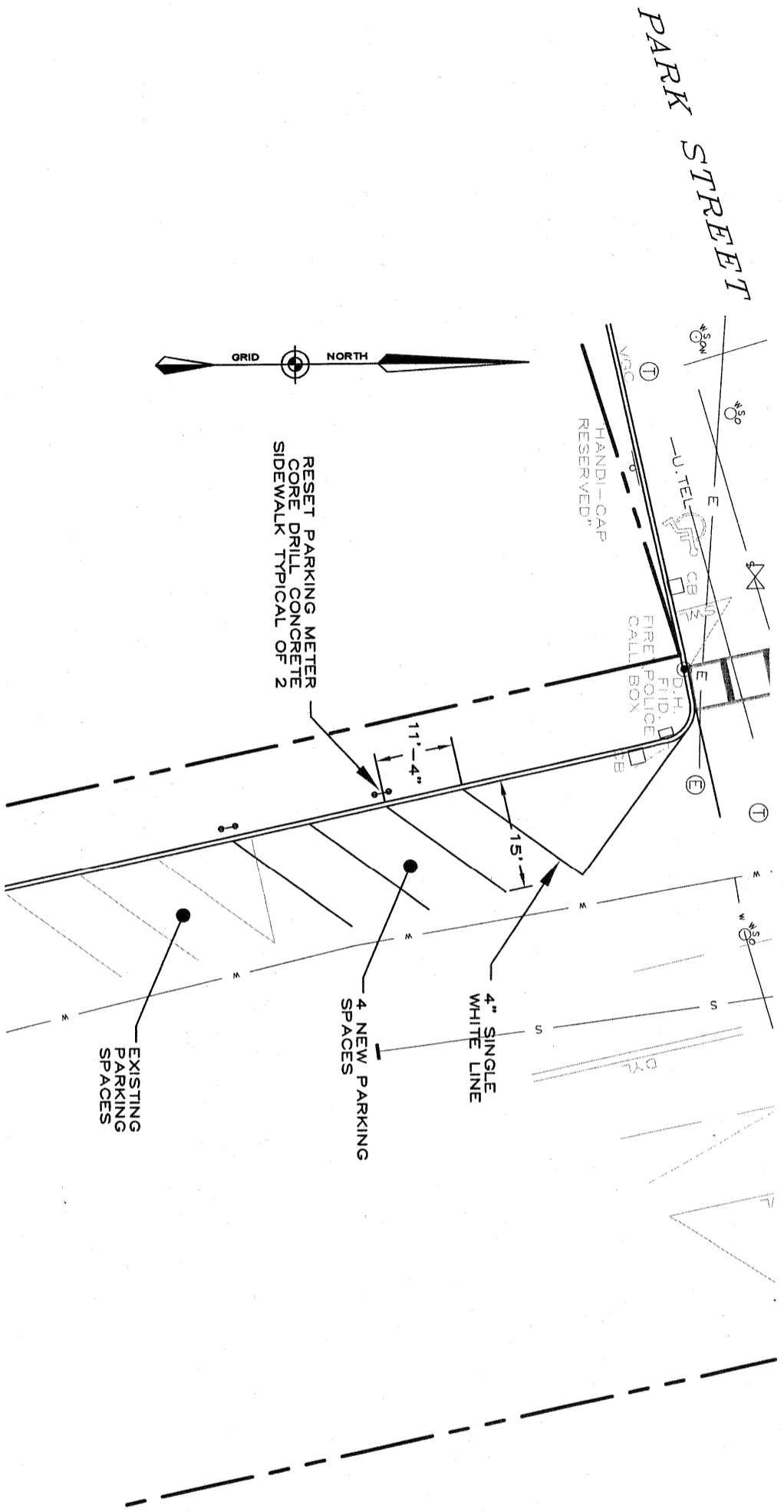
PROPOSED SITE PLAN
EAGLE SQUARE
REFERENCE SHEET: 3278 SITE



**TURNER
GROUP**

THE H.L. TURNER GROUP Inc.
ARCHITECTS • ENGINEERS
CONSTRUCTION MANAGERS • BUILDING SCIENTISTS
27 LOCKE ROAD
CONCORD, NEW HAMPSHIRE 03301
T-(603) 228-1122 / F-(603) 228-1126
CONCORD NH • HARRISON ME • DANVILLE VT

**BUS SHELTER
PROJECT**
CONCORD, NEW HAMPSHIRE



(IN FEET)
1 inch = 20 ft.

GRAPHIC SCALE

ISSUED 10/25/07 FOR BIDDING

BUS SHELTER PROJECT
CONCORD, NEW HAMPSHIRE

THE H.L. TURNER GROUP Inc.
ARCHITECTS · ENGINEERS
CONSTRUCTION MANAGERS · BUILDING SCIENTISTS
27 LOCKE ROAD
CONCORD, NEW HAMPSHIRE 03301
T-(603) 228-1122 / F-(603) 228-1126
CONCORD NH · HARRISON ME · DANVILLE VT

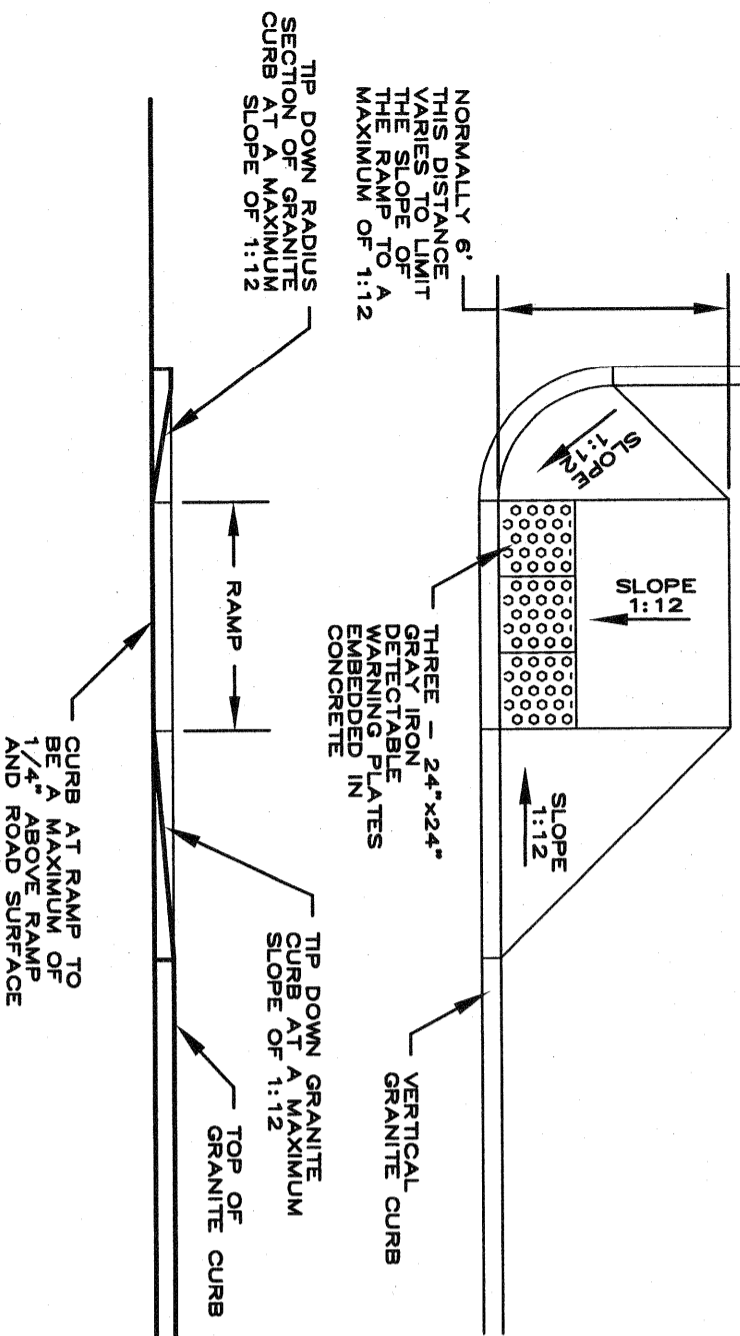


PROPOSED SITE PLAN
N. MAIN ST STRIPPING
REFERENCE SHEET: 3278 SITE

C2.2

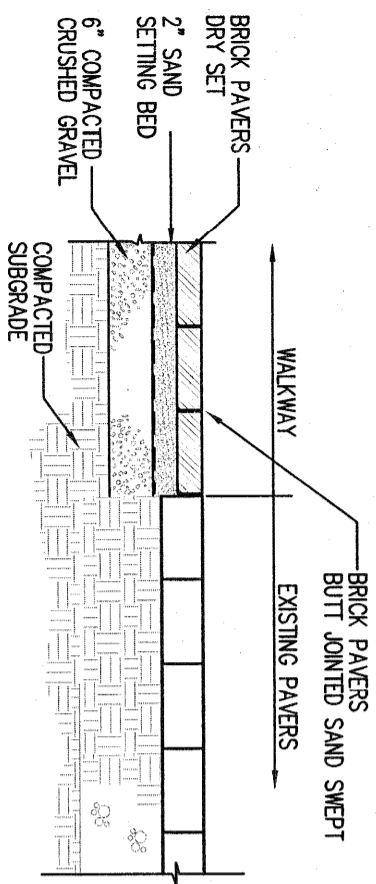
DATE: 10/01/07

CONCRETE WALK



C21 | CDI

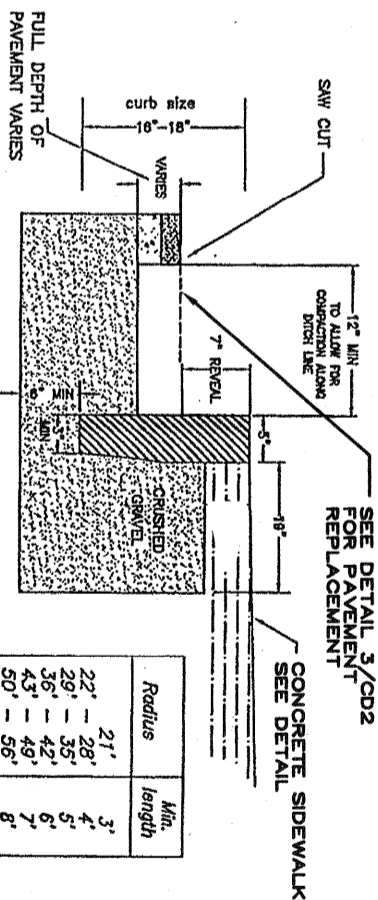
ACCESSIBLE SIDEWALK RAMP DETAIL
SCALE: NONE



5 | C20 | CDI

BRICK PAVER DETAIL
SCALE: NONE

COMPACT TO A MINIMUM OF 95%
HAND COMPACTION IS NOT ALLOWED



| Radius | Min. length |
|-----------|-------------|
| 21' | 3' |
| 22' - 28' | 4' |
| 29' - 35' | 5' |
| 36' - 42' | 6' |
| 43' - 49' | 7' |
| 50' - 56' | 8' |
| 57' - 60' | 9' |
| over 60' | 10' |

MIN. LENGTH OF CURB STONES 3FT.
MAX. LENGTH OF CURB STONES 10FT.
MAX. LENGTH OF STRAIGHT CURB STONES LAID ON CURVES SEE CHART
NOTE: ADJOINING STONES SHALL HAVE THE SAME OR APPROXIMATE LENGTH.
NOTE: CRUSHED GRAVEL TO BE NHDOT 304.3

3 | C20 | CDI

CURB REQUIREMENTS
SCALE: NONE

FINISH SURFACE AND TOLERANCES FOR GRANITE CURBING

| TYPE | AREA | FINISH SURFACE | TOLERANCE, INCHES |
|-----------------------|---------------------|---|-------------------|
| VERTICAL GRANITE CURB | TOP | 5 INCHES WIDE OR AS SHOWN OTHERWISE, SAWN TRUE PLANE FRONT AND BACK ARRIS LINES PITCHED STRAIGHT AND PARALLEL. | + 1/8 - 1/8 |
| | FRONT FACE | RIGHT ANGLE TO TOP, APPROX. TRUE PLANE, NO DRILL HOLES SHOWING IN TOP 10 INCHES. | + 1 - 1/2 |
| | BACK FACE (exposed) | PLANE PARALLEL WITH FRONT FACE STRAIGHT SPLIT TO 1-1/2 INCHES BELOW THE EXPOSED SURFACE. NO LARGER THAN 1/4 INCH SEGMENT OF DRILL HOLES SHOWING IN ARRIS LINES. | + 1 - 1 |

ISSUED 10/25/07 FOR BIDDING

BUS SHELTER PROJECT

CONCORD, NEW HAMPSHIRE

THE H.L. TURNER GROUP Inc.

ARCHITECTS • ENGINEERS
CONSTRUCTION MANAGERS • BUILDING SCIENTISTS

27 LOCKE ROAD
CONCORD, NEW HAMPSHIRE 03301
T-(603) 228-1122 / F-(603) 228-1126

CONCORD NH • HARRISON ME • DANVILLE VT

TURNER GROUP



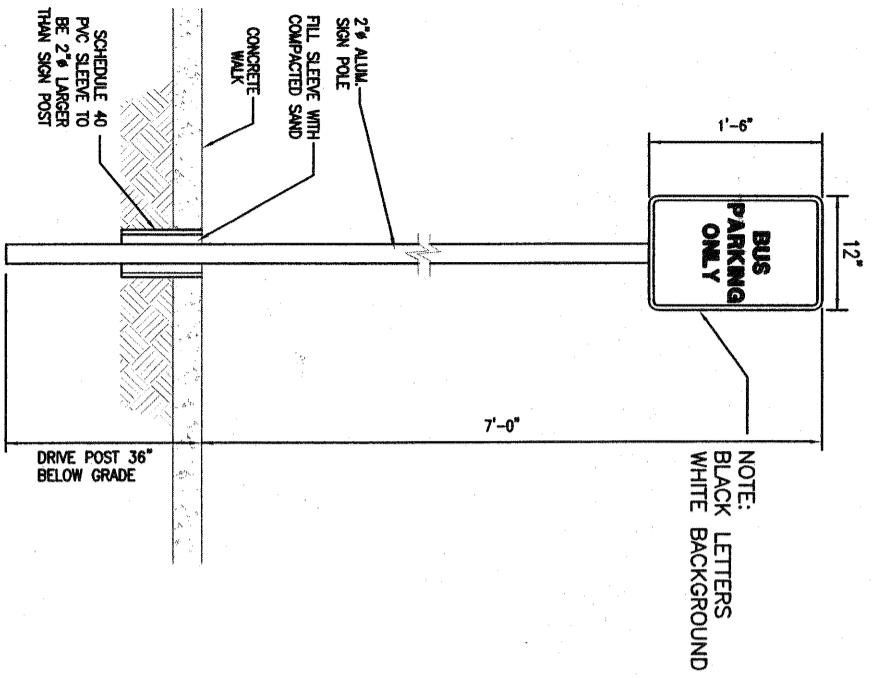
DETAILS - I

REFERENCE SHEET: 3278 SITE

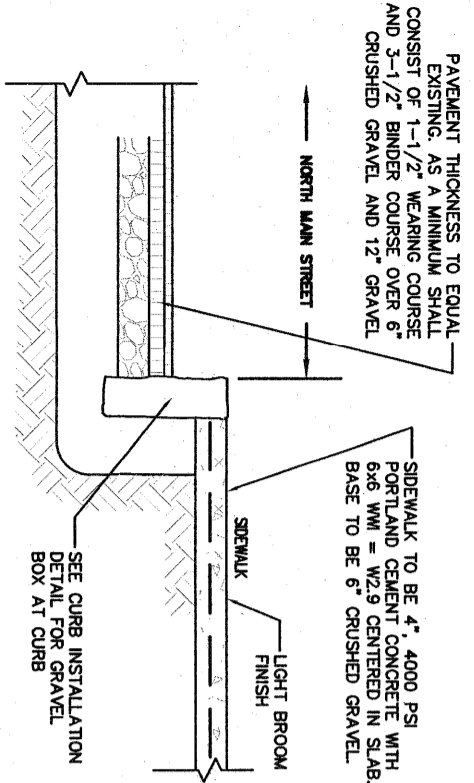
FIGURE:

CD1

DATE: 10/01/07

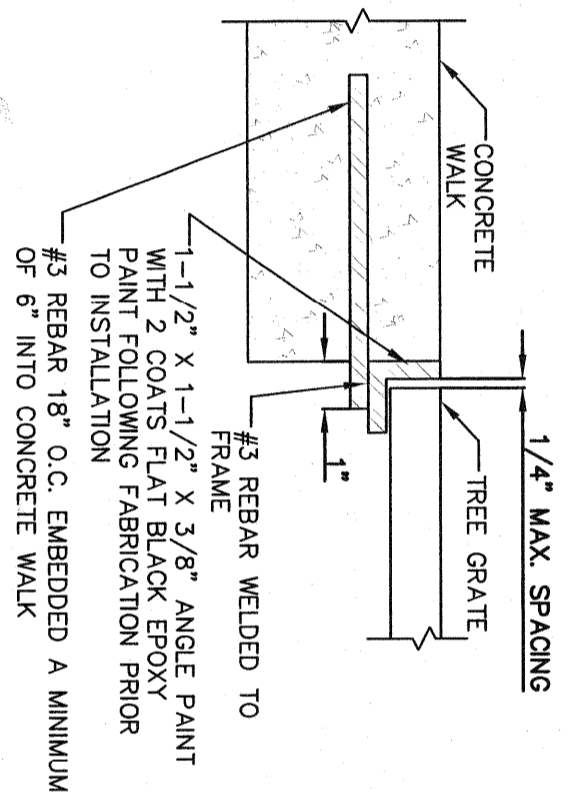


1 SIGN POST & MOUNTING DETAIL
SCALE: NONE

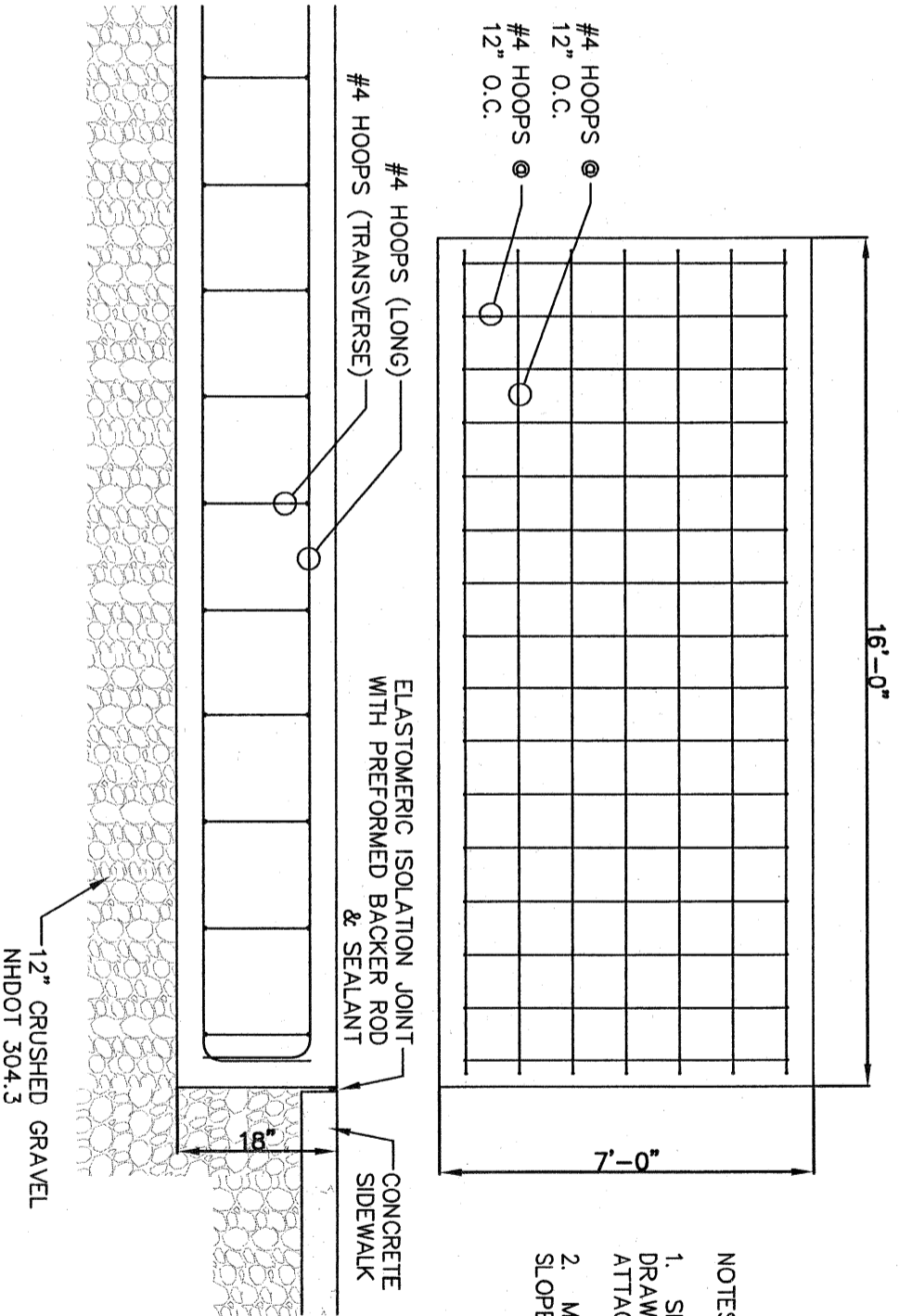


- NOTES:
1. INSTALL 1/2" STAINLESS STEEL DOWELS, 2'-0" O.C. BETWEEN EXISTING AND NEW SIDEWALKS. DOWELS TO BE EMBEDDED 12" IN EACH WALK. END OF DOWEL IN NEW SIDEWALK TO HAVE PLASTIC SLEEVE BAND BREAKER DOWELS TO BE CENTERED IN WALKS.
 2. INSTALL ELASTOMERIC ISOLATION JOINT FILLER WITH PRE-FORMED BACKER ROD AT JOINT BETWEEN OLD AND NEW SIDEWALK.
 3. INSTALL CONTRACTION JOINTS IN NEW SIDEWALK MATCHING LOCATION AND SPACING AT EXISTING SIDEWALK. IN NO CASE GREATER THAN 8'-0" SPACING.
 4. CONTRACTION JOINTS TO EXTEND A MINIMUM OF 1/4" OF THE SLAB DEPTH. CLEANLY PLUNGE CUT MASON'S TROWEL INTO TOOLED JOINT TO INSURE PLANE OF WEAKNESS.

3 TYPICAL SIDEWALK AND ROAD DETAIL
SCALE: NONE

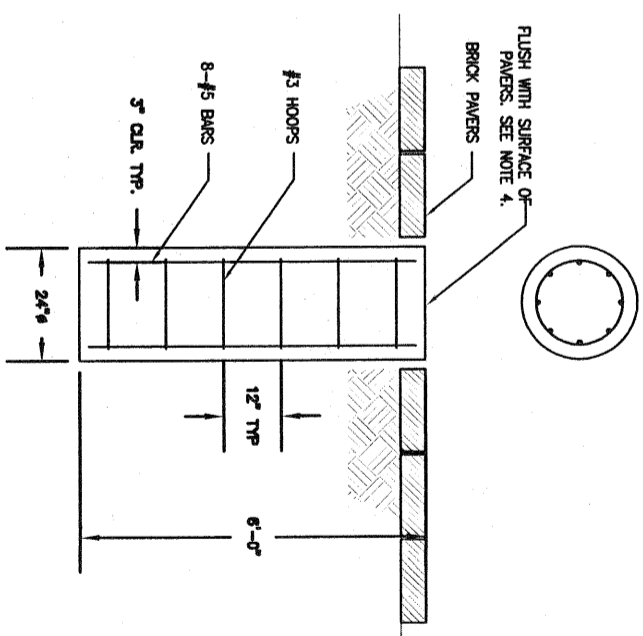


5 TREE GRATE FRAME DETAIL
SCALE: NONE



- NOTES:
1. SEE ARCHITECTURAL DRAWINGS FOR ATTACHED DETAILS.
 2. MAINTAIN EXISTING SLOPE AT SIDEWALK.

4 FOUNDATION DETAIL
SCALE: NONE



7 TYP. FOOTINGS FOR EAGLE SQUARE
SCALE: NONE

- NOTES:
1. CONCRETE FOR FOOTINGS TO BE 3000 PSI AIR-ENTRAINED 4'-6" SLUMP.
 2. REBAR TO BE fy-60,000 PSI.
 3. TWO FOOTINGS REQUIRED. SEE ARCHITECTURAL DRAWINGS FOR LOCATION AND ANCHORING DETAILS.
 4. CONCRETE TO BE TINTED TO MATCH SEAT PLATFORM W/ COLORED DRY SHAKE HARDENER "EMERCHROME" BY ILL. SCHOFIELD OR EQUAL. SUBMIT COLOR SAMPLE TO ARCHITECT FOR APPROVAL.

BUS SHELTER PROJECT
CONCORD, NEW HAMPSHIRE

THE H.L. TURNER GROUP Inc.
ARCHITECTS ENGINEERS
CONSTRUCTION MANAGERS BUILDING SCIENTISTS
27 LOCKE ROAD
CONCORD, NEW HAMPSHIRE 03301
T-(603) 228-1122 / F-(603) 228-1126
CONCORD NH · HARRISON ME · DANVILLE VT

TURNER GROUP



DETAILS - II

REFERENCE SHEET: 3278 SITE

FIGURE: CD2
DATE: 10/01/07

ISSUED 10/25/07 FOR BIDDING